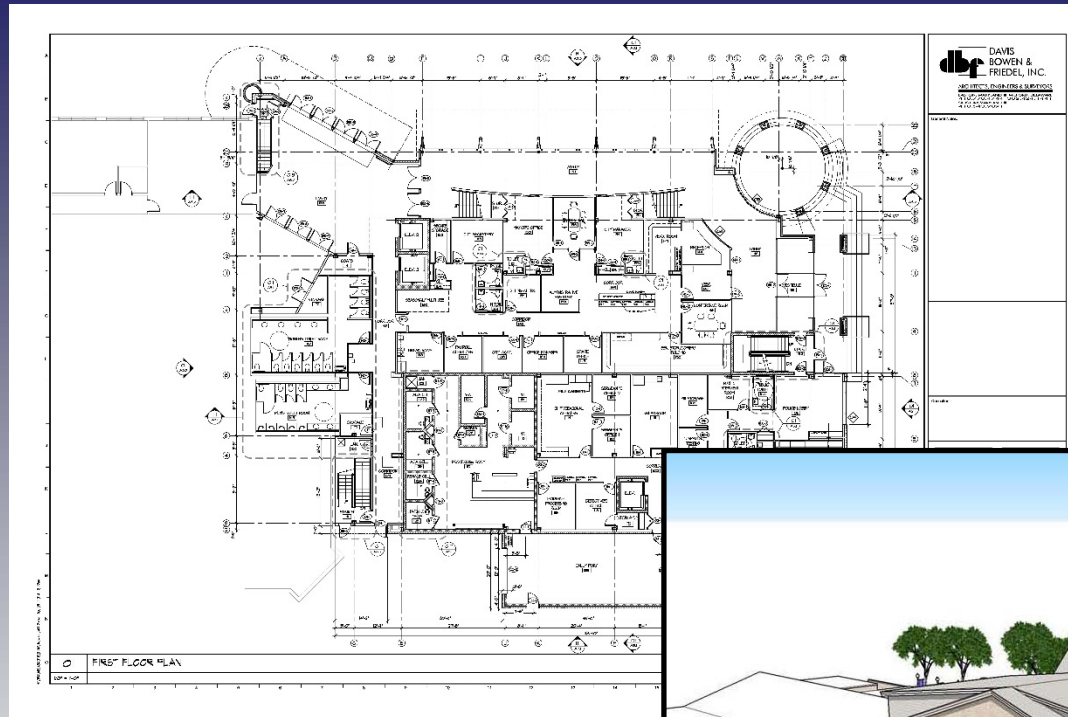


Rehoboth Beach City Hall Complex:

Task Force DD Meeting 1 Rehoboth Beach, Delaware

December 8, 2014



ARCHITECTS ENGINEERS SURVEYORS

ONE PLAZA EAST, SUITE 200 PO. BOX 93 SALISBURY, MD 21803-0093
TEL 410.543.9091 FAX 410.543.4172
23 NORTH WALNUT STREET PO. BOX 809 MILFORD, DE 19963
TEL 302.424.1441 FAX 302.424.0430
WEB www.dbfinc.com

Meeting Agenda

- Welcome
- Review: Work Completed to Date
- Review: Updated Phasing and Schedule
- Review: Fire Hall Renovation Concepts
- Review: Survey, Updated Floor Plans
- Review: Updated 3D Model of Exterior
- Review: Scope & Schedule for Next Meeting

Rehoboth Beach
City Hall Complex



ARCHITECTS ENGINEERS SURVEYORS

ONE PLAZA EAST, SUITE 200 PO. BOX 93 SALISBURY, MD. 21803-0093
TEL 410.543.9091 FAX 410.543.4172
23 NORTH WALNUT STREET PO. BOX 809 MILFORD, DE. 19963
TEL 302.424.1441 FAX 302.424.0430
WEB www.dbfinc.com

Work Completed to Date

- Designers Have Blocked Out Construction Drawings from Schematic Design Models
- Architects Have Performed Code Reviews and are Coordinating Plans, Sections, Schedules and Details
- Meetings have been Conducted with City Manager and Key Staff
- Police Department Site Visits: Middletown, Camden, Seaford
- Floor Plans have been Updated Based Upon Staff Meetings
- Structural Engineers have Established Framing/Column Grid
- 3D Model has been Updated
- Complete Boundary and Topographic Survey has been Completed
- Mechanical/Electrical Engineers have Begun Systems' Design
- Phasing and Scheduling have been Evaluated

Rehoboth Beach
City Hall Complex



ARCHITECTS ENGINEERS SURVEYORS

ONE PLAZA EAST, SUITE 200 PO. BOX 93 SALISBURY, MD. 21803-0093
TEL 410.543.9091 FAX 410.543.4172
23 NORTH WALNUT STREET PO. BOX 809 MILFORD, DE. 19963
TEL 302.424.1441 FAX 302.424.0430
WEB www.dbfinc.com

Review: Phasing and Schedule

Fall 2015: Install On-Site Portables
Relocate Tech Services to Public Works Building
Demolish City Hall, Parking Meter, Main Street, Tech Services
Renovate Fire Hall for Police/Alderman's Court
Relocate All Departments
Begin Site Construction and New Parking Meter/Main Street

Rehoboth Beach
City Hall Complex



DAVIS
BOWEN &
FRIEDEL, INC.



ARCHITECTS ENGINEERS SURVEYORS

ONE PLAZA EAST, SUITE 200 PO. BOX 93 SALISBURY, MD 21803-0093
TEL 410.543.9091 FAX 410.543.4172
23 NORTH WALNUT STREET PO. BOX 809 MILFORD, DE 19963
TEL 302.424.1441 FAX 302.424.0430
WEB www.dbfinc.com

Review: Phasing and Schedule

Spring 2016: Complete Construction of Parking Meter/Main Street Bldg.
Occupy Parking Meter/Main Street Building
Begin City Hall Construction

Winter 2016: Complete City Hall Construction
Occupy City Hall
Open Convention Center (12/28/16)

Rehoboth Beach
City Hall Complex



ARCHITECTS ENGINEERS SURVEYORS

ONE PLAZA EAST, SUITE 200 PO. BOX 93 SALISBURY, MD 21803-0093
TEL 410.543.9091 FAX 410.543.4172
23 NORTH WALNUT STREET PO. BOX 809 MILFORD, DE 19963
TEL 302.424.1441 FAX 302.424.0430
WEB www.dbfinc.com

Rehoboth Beach City Hall Complex: Design Development

Review: Phasing and Schedule



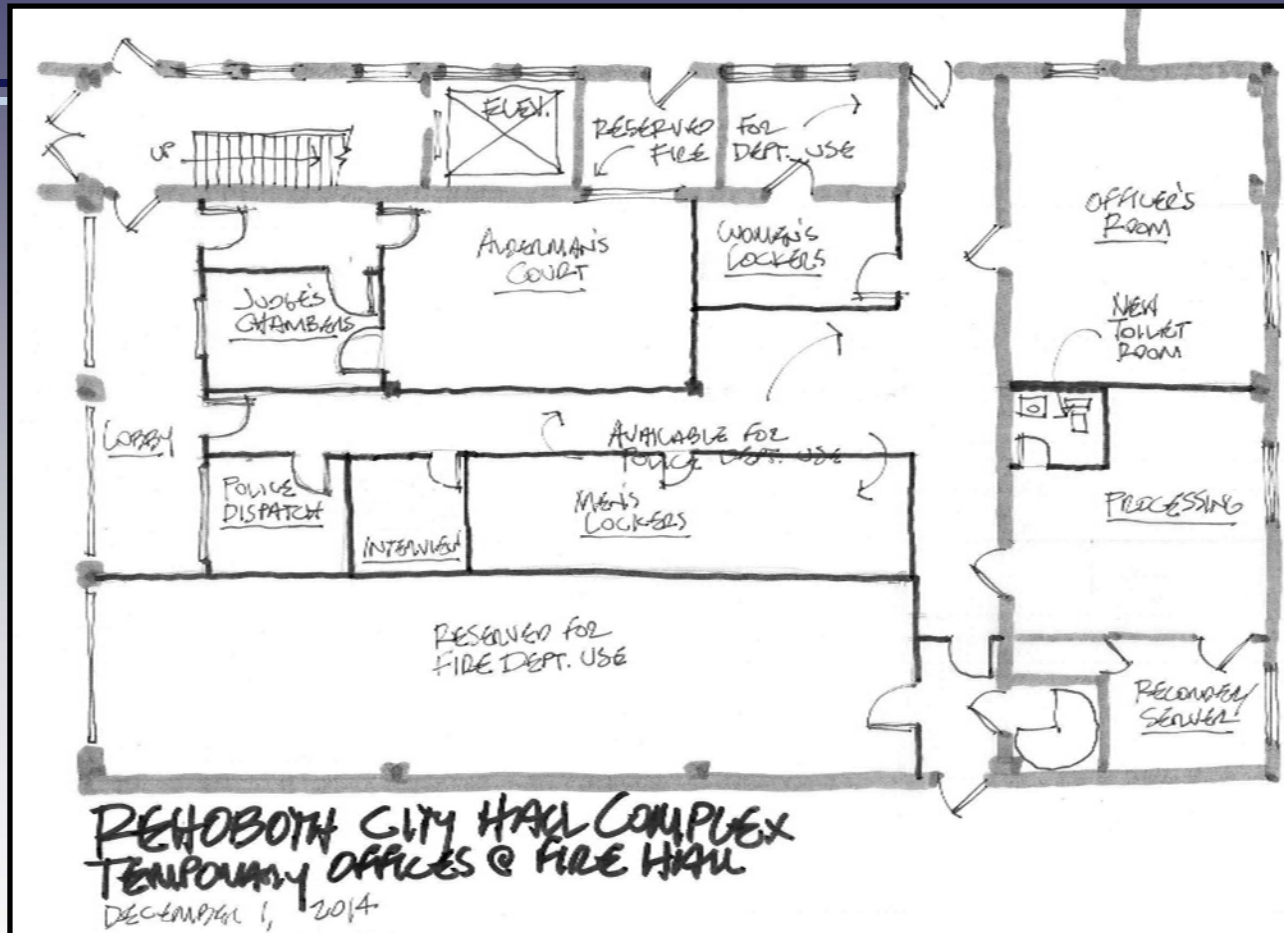
Rehoboth Beach
City Hall Complex



ARCHITECTS ENGINEERS SURVEYORS

ONE PLAZA EAST, SUITE 200 PO. BOX 93 SALESBURY, MD 21803-0093
TEL 410.343.9091 FAX 410.343.4172
23 NORTH WALNUT STREET PO. BOX 809 MILFORD, DE 19963
TEL 302.424.1441 FAX 302.424.0430
WEB www.dbbinc.com

Review: Fire Hall Renovation Plans



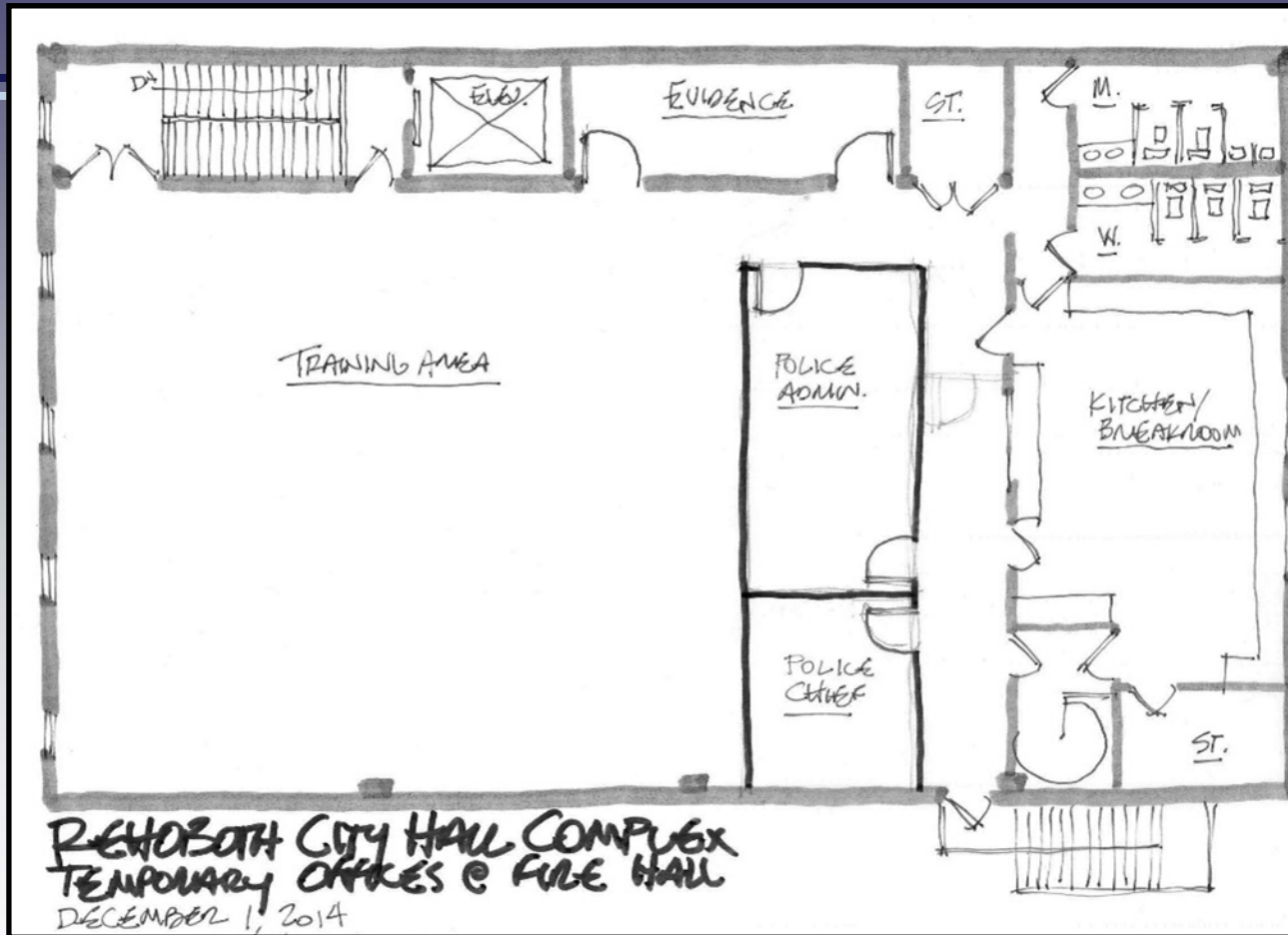
First Floor Plan



ARCHITECTS ENGINEERS SURVEYORS

ONE PLAZA EAST, SUITE 200 PO. BOX 93 SALISBURY, MD 21803-0093
TEL 410.543.9091 FAX 410.543.4172
23 NORTH WALNUT STREET PO. BOX 809 MILFORD, DE 19963
TEL 302.424.1441 FAX 302.424.0430
WEB www.dbfinc.com

Review: Fire Hall Renovation Plans



Second Floor Plan



ARCHITECTS ENGINEERS SURVEYORS

ONE PLAZA EAST, SUITE 200 P.O. BOX 93 SALISBURY, MD 21803-0093
TEL 410.543.9091 FAX 410.543.4172
23 NORTH WALNUT STREET P.O. BOX 809 MILFORD, DE 19963
TEL 302.424.1441 FAX 302.424.0430
WEB www.dbfinc.com

Rehoboth Beach City Hall Complex: Design Development

Review: Survey, Updated Plans



Boundary/Topographic Survey



ARCHITECTS ENGINEERS SURVEYORS

ONE PLAZA EAST, SUITE 200 PO. BOX 93 SALISBURY, MD 21803-0093
TEL 410.543.9091 FAX 410.543.4172
23 NORTH WALNUT STREET PO. BOX 809 MILFORD, DE 19963
TEL 302.424.1441 FAX 302.424.0430
WEB www.dbfinc.com

Review: Survey, Updated Plans



ONE PLAZA EAST SUITE 200 PO BOX 93 SALISBURY, MD 21803-0093
TEL 410-543-9091 FAX 410-543-4172
23 NORTH WALNUT STREET PO BOX 809 MILFORD, DE 19963
TEL 302-424-1441 FAX 302-424-0430
WEB www.dbtinc.com

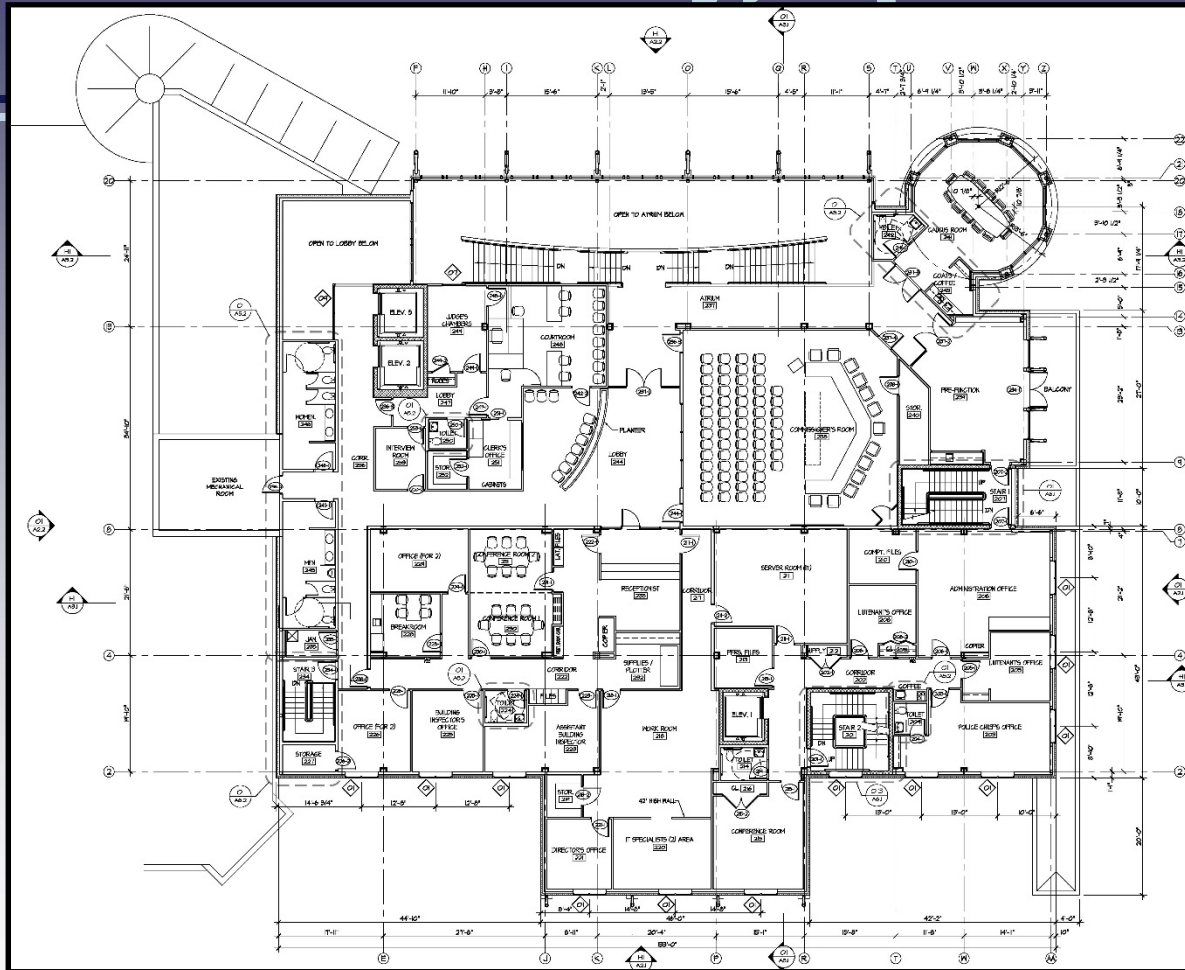
Review: Survey, Updated Plans



ONE PLAZA EAST SUITE 200 PO BOX 93 SALISBURY, MD 21803-0093
TEL 410.543.9091 FAX 410.543.4172
23 NORTH WALNUT STREET PO BOX 809 MILFORD, DE 19963
TEL 302.424.1441 FAX 302.424.0430
WEB www.dhinc.com

Rehoboth Beach City Hall Complex: Design Development

Review: Survey, Updated Plans



Second Floor Plan

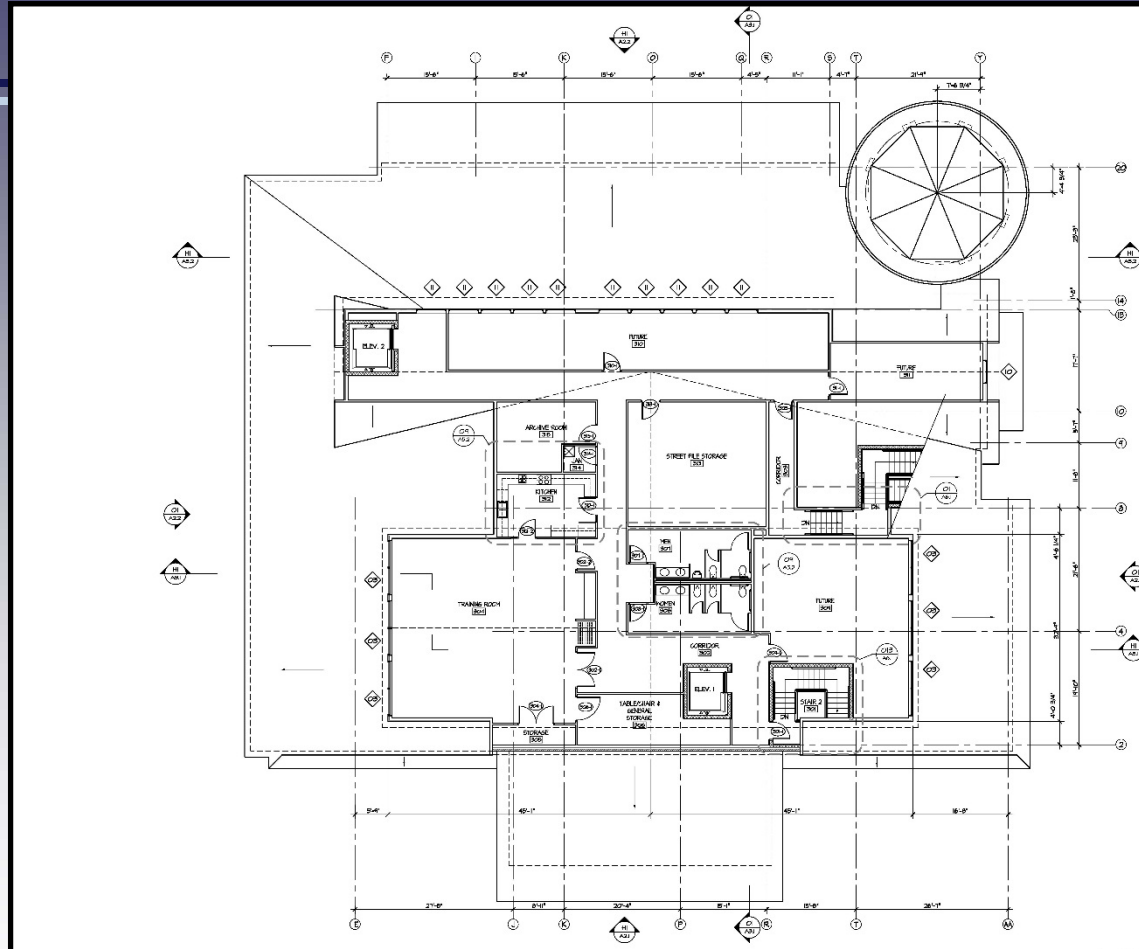


ARCHITECTS ENGINEERS SURVEYORS

ONE PLAZA EAST SUITE 200 P.O. BOX 93 SALISBURY, MD 21803-0093
TEL 410.543.9091 FAX 410.543.4172
23 NORTH WALNUT STREET P.O. BOX 809 MILFORD, DE 19963
TEL 302.424.1441 FAX 302.424.0430
WEB www.dbfinc.com

Rehoboth Beach City Hall Complex: Design Development

Review: Survey, Updated Plans



Third Floor Plan



ARCHITECTS ENGINEERS SURVEYORS

ONE PLAZA EAST, SUITE 200, P.O. BOX 93, SALISBURY, MD 21803-0093
TEL 410.543.9091 FAX 410.543.4172
23 NORTH WALNUT STREET, P.O. BOX 809, MILFORD, DE 19963
TEL 302.424.1441 FAX 302.424.0430
WEB www.dbfnc.com

Rehoboth Beach City Hall Complex: Design Development

Review: Updated 3D Model



Southwest View from Rehoboth Avenue



ARCHITECTS ENGINEERS SURVEYORS

ONE PLAZA EAST, SUITE 200 PO. BOX 93 SALESBURY, MD 21803-0093
TEL 410.543.9091 FAX 410.543.4172
23 NORTH WALNUT STREET PO. BOX 809 MILFORD, DE 19963
TEL 302.424.1441 FAX 302.424.0430
WEB www.dbfinc.com

Rehoboth Beach City Hall Complex: Design Development

Review: Updated 3D Model



Southeast View from Rehoboth Avenue
(With Banners)



ARCHITECTS ENGINEERS SURVEYORS

ONE PLAZA EAST, SUITE 200 PO. BOX 93 SALISBURY, MD 21803-0093
TEL 410.543.9091 FAX 410.543.4172
23 NORTH WALNUT STREET PO. BOX 809 MILFORD, DE 19963
TEL 302.424.1441 FAX 302.424.0430
WEB www.dbfinc.com

Rehoboth Beach City Hall Complex: Design Development

Review: Updated 3D Model



Southeast View from Rehoboth Avenue
(Without Banners)



ARCHITECTS ENGINEERS SURVEYORS

ONE PLAZA EAST, SUITE 200 PO. BOX 93 SALISBURY, MD 21803-0093
TEL 410.543.9091 FAX 410.543.4172
23 NORTH WALNUT STREET PO. BOX 809 MILFORD, DE 19963
TEL 302.424.1441 FAX 302.424.0430
WEB www.dbfinc.com

Rehoboth Beach City Hall Complex: Design Development

Review: Updated 3D Model



East View from Rehoboth Avenue



ARCHITECTS ENGINEERS SURVEYORS

ONE PLAZA EAST, SUITE 200 PO. BOX 93 SALISBURY, MD 21803-0093
TEL 410.543.9091 FAX 410.543.4172
23 NORTH WALNUT STREET PO. BOX 809 MILFORD, DE 19963
TEL 302.424.1441 FAX 302.424.0430
WEB www.dbfinc.com

Rehoboth Beach City Hall Complex: Design Development

Review: Updated 3D Model



Convention Center View from Rehoboth Avenue
(With Banners)



ARCHITECTS ENGINEERS SURVEYORS

ONE PLAZA EAST, SUITE 200 PO. BOX 93 SALISBURY, MD 21803-0093
TEL 410.543.9091 FAX 410.543.4172
23 NORTH WALNUT STREET PO. BOX 809 MILFORD, DE 19963
TEL 302.424.1441 FAX 302.424.0430
WEB www.dbfinc.com

Rehoboth Beach City Hall Complex: Design Development

Review: Updated 3D Model



Convention Center View from Rehoboth Avenue
(Without Banners)



DAVIS
BOWEN &
FRIEDEL, INC.



ARCHITECTS ENGINEERS SURVEYORS

ONE PLAZA EAST, SUITE 200 PO. BOX 93 SALISBURY, MD 21803-0093
TEL 410.543.9091 FAX 410.543.4172
23 NORTH WALNUT STREET PO. BOX 809 MILFORD, DE 19963
TEL 302.424.1441 FAX 302.424.0430
WEB www.dbfinc.com

Rehoboth Beach City Hall Complex: Design Development

Review: Updated 3D Model



Convention Center View from Rehoboth Avenue
(With Banners)



ARCHITECTS ENGINEERS SURVEYORS

ONE PLAZA EAST, SUITE 200 PO. BOX 93 SALISBURY, MD 21803-0093
TEL 410.543.9091 FAX 410.543.4172
23 NORTH WALNUT STREET PO. BOX 809 MILFORD, DE 19963
TEL 302.424.1441 FAX 302.424.0430
WEB www.dbfinc.com

Rehoboth Beach City Hall Complex: Design Development

Review: Updated 3D Model



Convention Center View from Rehoboth Avenue
(Without Banners)



ARCHITECTS ENGINEERS SURVEYORS

ONE PLAZA EAST, SUITE 200 PO. BOX 93 SALISBURY, MD 21803-0093
TEL 410.543.9091 FAX 410.543.4172
23 NORTH WALNUT STREET PO. BOX 809 MILFORD, DE 19963
TEL 302.424.1441 FAX 302.424.0430
WEB www.dbfinc.com

Rehoboth Beach City Hall Complex: Design Development

Review: Updated 3D Model



North View from Lake Avenue



ARCHITECTS ENGINEERS SURVEYORS

ONE PLAZA EAST, SUITE 200 PO. BOX 93 SALISBURY, MD 21803-0093
TEL 410.543.9091 FAX 410.543.4172
23 NORTH WALNUT STREET PO. BOX 809 MILFORD, DE 19963
TEL 302.424.1441 FAX 302.424.0430
WEB www.dbfinc.com

Rehoboth Beach City Hall Complex: Design Development

Review: Updated 3D Model



Aerial from East Parking Lot



**DAVIS
BOWEN &
FRIEDEL, INC.**



ARCHITECTS ENGINEERS SURVEYORS

ONE PLAZA EAST, SUITE 200 PO. BOX 93 SALISBURY, MD. 21803-0093
TEL 410.543.9091 FAX 410.543.4172
23 NORTH WALNUT STREET PO. BOX 809 MILFORD, DE. 19963
TEL 302.424.1441 FAX 302.424.0430
WEB www.dbfinc.com

Rehoboth Beach City Hall Complex: Design Development

Review: Updated 3D Model



Aerial from Lake Avenue



DAVIS
BOWEN &
FRIEDEL, INC.



ARCHITECTS ENGINEERS SURVEYORS

ONE PLAZA EAST, SUITE 200 PO. BOX 93 SALISBURY, MD 21803-0093
TEL 410.543.9091 FAX 410.543.4172
23 NORTH WALNUT STREET PO. BOX 809 MILFORD, DE 19963
TEL 302.424.1441 FAX 302.424.0430
WEB www.dbfinc.com

Rehoboth Beach City Hall Complex: Design Development

Review: Updated 3D Model



Aerial from West Parking Lot



ARCHITECTS ENGINEERS SURVEYORS

ONE PLAZA EAST, SUITE 200 PO. BOX 93 SALISBURY, MD 21803-0093
TEL 410.543.9091 FAX 410.543.4172
23 NORTH WALNUT STREET PO. BOX 809 MILFORD, DE 19963
TEL 302.424.1441 FAX 302.424.0430
WEB www.dbfinc.com

Rehoboth Beach City Hall Complex: Design Development

Review: Updated 3D Model



Aerial from Rehoboth Avenue



DAVIS
BOWEN &
FRIEDEL, INC.



ARCHITECTS ENGINEERS SURVEYORS

ONE PLAZA EAST, SUITE 200 P.O. BOX 93 SALISBURY, MD 21803-0093
TEL 410.543.9091 FAX 410.543.4172
23 NORTH WALNUT STREET P.O. BOX 809 MILFORD, DE 19963
TEL 302.424.1441 FAX 302.424.0430
WEB www.dbfinc.com

Next Meeting

- Present Completed Design Development Drawings
- Review Atrium 3D Model
- Present Cost Estimate for Complex
- Present Updated Phasing/Schedule for Complex
- Present Schematic Design of Parking Meter/Main Street Building

Next Meeting Date: February 9, 2015



ARCHITECTS ENGINEERS SURVEYORS

ONE PLAZA EAST, SUITE 200 PO. BOX 93 SALISBURY, MD. 21803-0093
TEL 410.543.9091 FAX 410.543.4172
23 NORTH WALNUT STREET PO. BOX 809 MILFORD, DE. 19963
TEL 302.424.1441 FAX 302.424.0430
WEB www.dbfinc.com