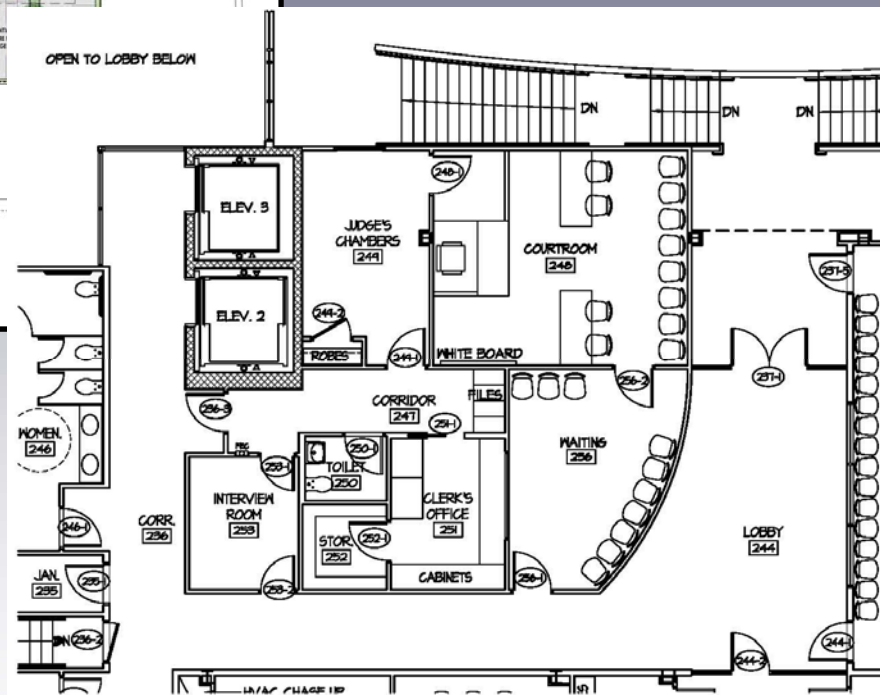


Rehoboth Beach City Hall Complex:

Task Force CD Meeting 2 Rehoboth Beach, Delaware

August 10, 2015



ARCHITECTS ENGINEERS SURVEYORS

ONE PLAZA EAST, SUITE 200, P.O. BOX 93, SALISBURY, MD 21803-0093
TEL 410.543.9091 FAX 410.543.4172
23 NORTH WALNUT STREET, P.O. BOX 809, MILFORD, DE 19963
TEL 302.424.1441 FAX 302.424.0430
WEB www.dbfinc.com

Meeting Agenda

- Welcome
- Update: Project Status
- Review: Commissioner's Room 3D
- Review: Commissioner's Room Requirements
- Review: Caucus Room Requirements
- Review: Updated Schedule
- Review: Scope & Schedule for Next Meeting

Rehoboth Beach
City Hall Complex



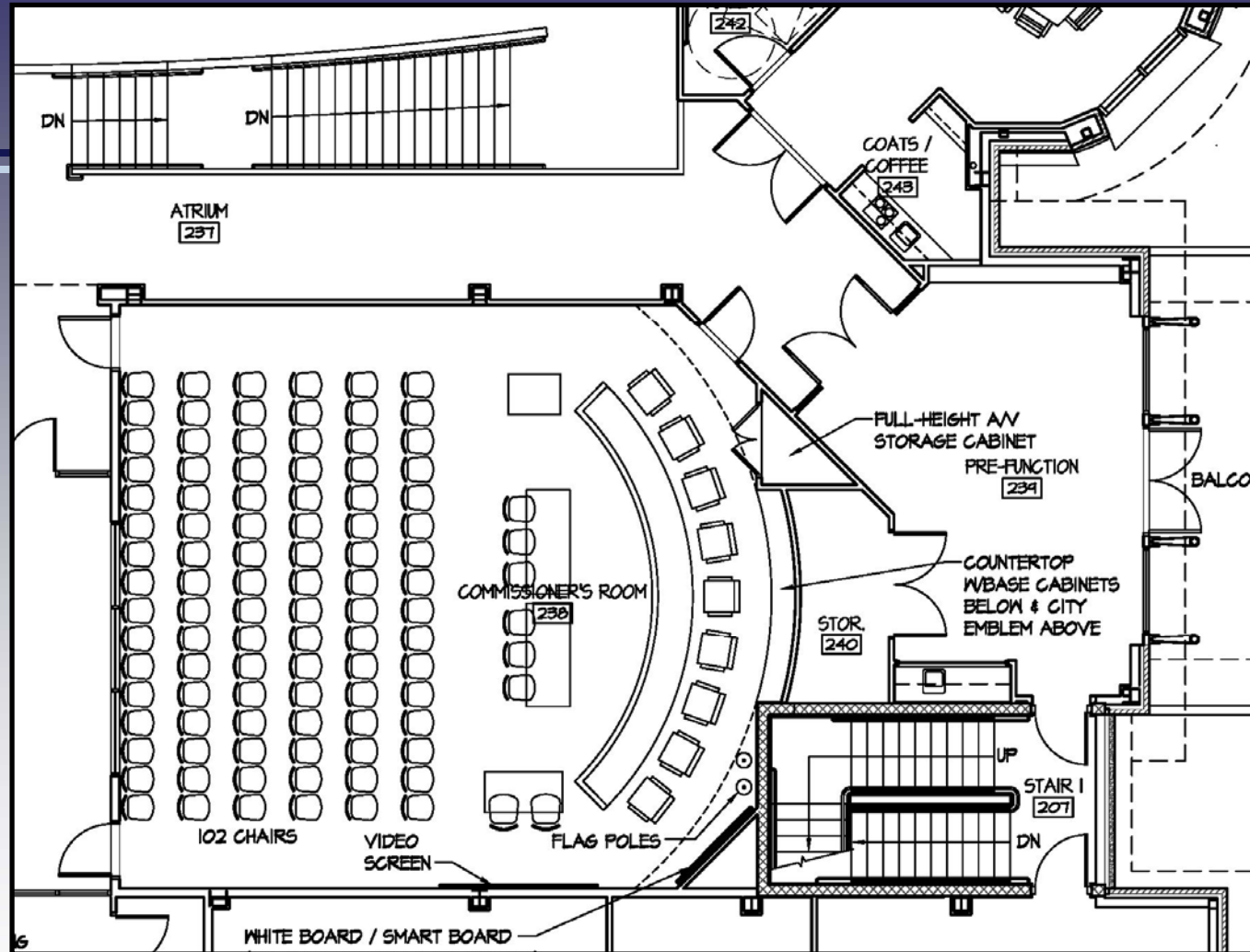
DAVIS
BOWEN &
FRIEDEL, INC.



ARCHITECTS ENGINEERS SURVEYORS

ONE PLAZA EAST, SUITE 200 PO. BOX 93 SALISBURY, MD 21803-0093
TEL 410.543.9091 FAX 410.543.4172
23 NORTH WALNUT STREET PO. BOX 809 MILFORD, DE 19963
TEL 302.424.1441 FAX 302.424.0430
WEB www.dbfinc.com

Review: Commissioner's Room 3D



Commissioner's Room



DAVIS
BOWEN &
FRIEDEL, INC.



ARCHITECTS ENGINEERS SURVEYORS

ONE PLAZA EAST, SUITE 200 PO. BOX 93 SALISBURY, MD 21803-0093
TEL 410.543.9091 FAX 410.543.4172
23 NORTH WALNUT STREET PO. BOX 809 MILFORD, DE 19963
TEL 302.424.1441 FAX 302.424.0430
WEB www.dbfinc.com

Review: Commissioner's Room 3D



Commissioner's Room



ARCHITECTS ENGINEERS SURVEYORS

ONE PLAZA EAST, SUITE 200 P.O. BOX 93 SALESBURY, MD 21803-0093
TEL 410.543.9091 FAX 410.543.4172
23 NORTH WALNUT STREET P.O. BOX 809 MILFORD, DE 19963
TEL 302.424.1441 FAX 302.424.0430
WEB www.dbfinc.com

Review: Commissioner's Room 3D



Commissioner's Room



ARCHITECTS ENGINEERS SURVEYORS

ONE PLAZA EAST, SUITE 200 PO. BOX 93 SALISBURY, MD. 21803-0093
TEL 410.543.9091 FAX 410.543.4172
23 NORTH WALNUT STREET PO. BOX 809 MILFORD, DE 19963
TEL 302.424.1441 FAX 302.424.0430
WEB www.dbfinc.com

Review: Commissioner's Room 3D



Commissioner's Room



ARCHITECTS ENGINEERS SURVEYORS

ONE PLAZA EAST, SUITE 200 P.O. BOX 93 SALISBURY, MD 21803-0093
TEL 410.543.9091 FAX 410.543.4172
23 NORTH WALNUT STREET P.O. BOX 809 MILFORD, DE 19963
TEL 302.424.1441 FAX 302.424.0430
WEB www.dbfinc.com

Rehoboth Beach City Hall Complex: Construction Documents

Review: Commissioner's Room 3D



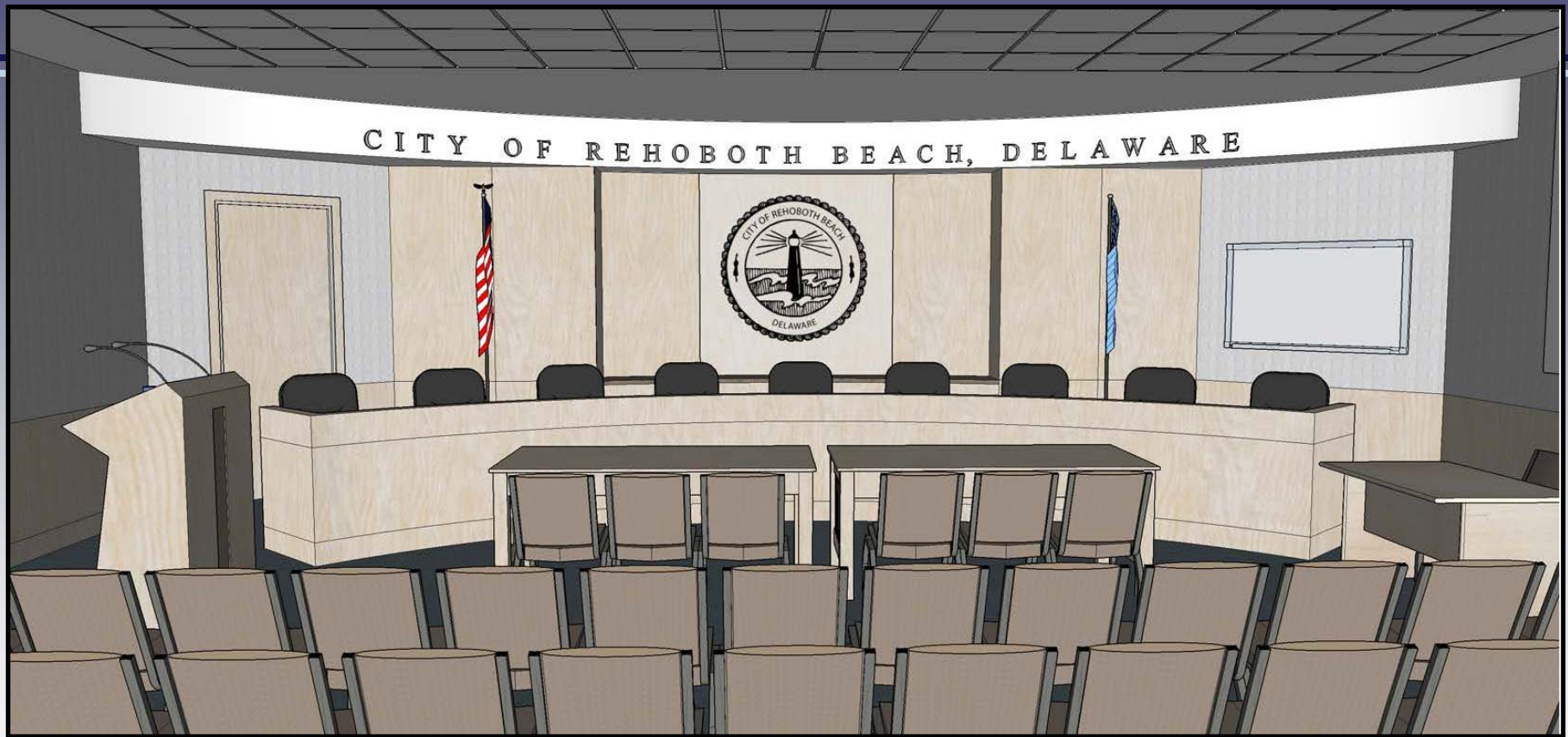
Commissioner's Room



ARCHITECTS ENGINEERS SURVEYORS

ONE PLAZA EAST, SUITE 200 PO. BOX 93 SALISBURY, MD 21803-0093
TEL 410.543.9091 FAX 410.543.4172
23 NORTH WALNUT STREET PO. BOX 809 MILFORD, DE 19963
TEL 302.424.1441 FAX 302.424.0430
WEB www.dbfinc.com

Review: Commissioner's Room 3D



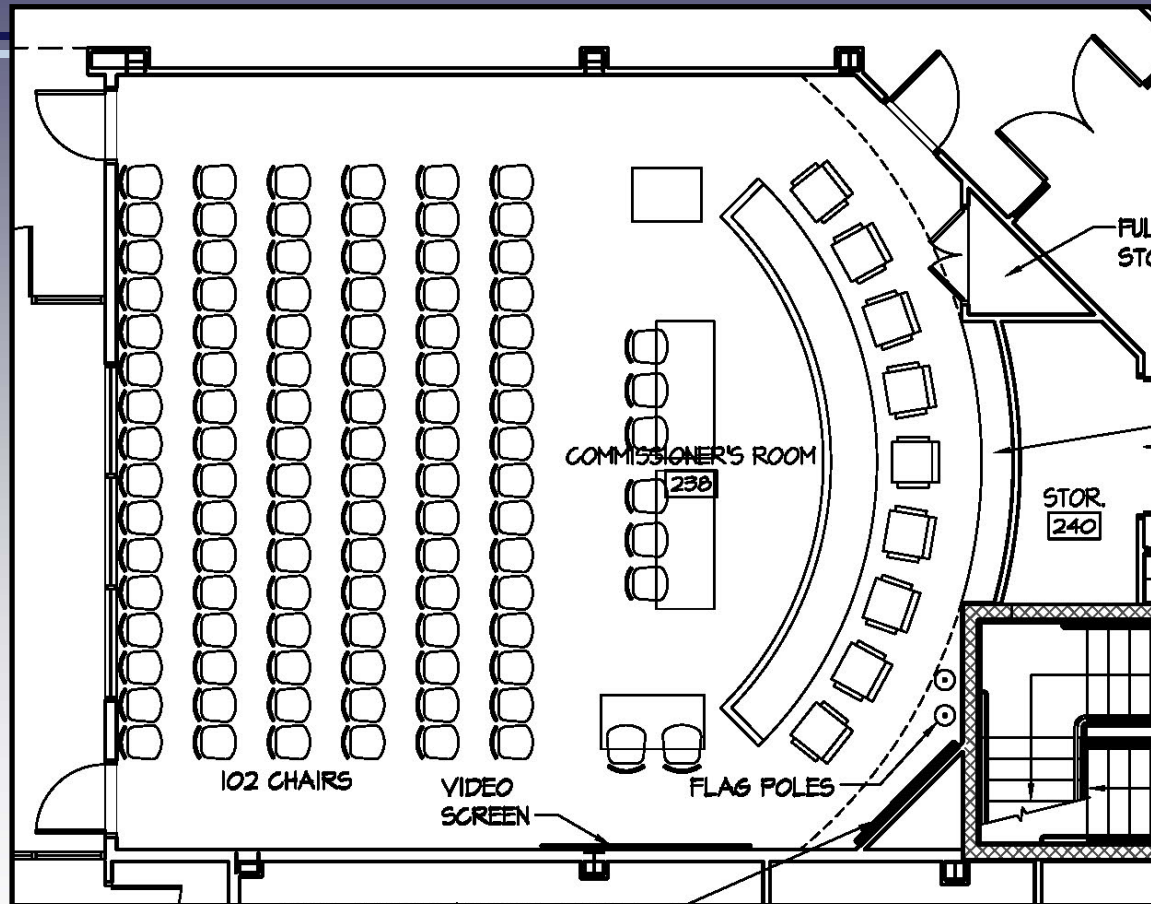
Commissioner's Room



ARCHITECTS ENGINEERS SURVEYORS

ONE PLAZA EAST, SUITE 200 PO. BOX 93 SALISBURY, MD. 21803-0093
TEL 410.543.9091 FAX 410.543.4172
23 NORTH WALNUT STREET PO. BOX 809 MILFORD, DE 19963
TEL 302.424.1441 FAX 302.424.0430
WEB www.dbfnc.com

Review: Commissioner's Room Requirements



Commissioner's Room



ARCHITECTS ENGINEERS SURVEYORS

ONE PLAZA EAST, SUITE 200, P.O. BOX 93, SALISBURY, MD 21803-0093
TEL 410.543.9091 FAX 410.543.4172
23 NORTH WALNUT STREET, P.O. BOX 809, MILFORD, DE 19963
TEL 302.424.1441 FAX 302.424.0430
WEB www.dbfinc.com

[illegible]

ONE PLAZA EAST SUITE 200 PO BOX 93 SALISBURY, MD 21803-0093
TEL 410.543.9091 FAX 410.543.4172
23 NORTH WALNUT STREET PO BOX 809 MILFORD, DE 19963
TEL 302.424.1441 FAX 302.424.0430
WEB www.dhinc.com

Review: Updated Schedule



EDiS COMPANY

TEL. (800) 995-EDiS • ediscompany.com

Rehoboth Beach City Hall Milestone projections

- | | |
|--|----------|
| • Receive bids for modular units | 9/2/15 |
| • Receive bids for demolition and site work | 9/14/15 |
| • Demolition of tech services building | 9/28/15 |
| • Move from Parking Department building to temporary space | 10/5/15 |
| • Modular trailers delivered and installed | 11/20/15 |
| • Demolish Parking Department building | 10/12/15 |
| • Start new Parking Department building | 10/26/15 |
| • Close Convention Center | 11/13/15 |
| • Occupy new Parking Dept. building | 5/2/16 |
| • Demolish City Hall building | 11/25/15 |
| • Prepare and bid Convention Center | 10/29/15 |
| • Receive bids on Convention Center | 12/11/15 |
| • Construct City Hall | 12/22/15 |
| • Open New City Hall | 1/31/17 |

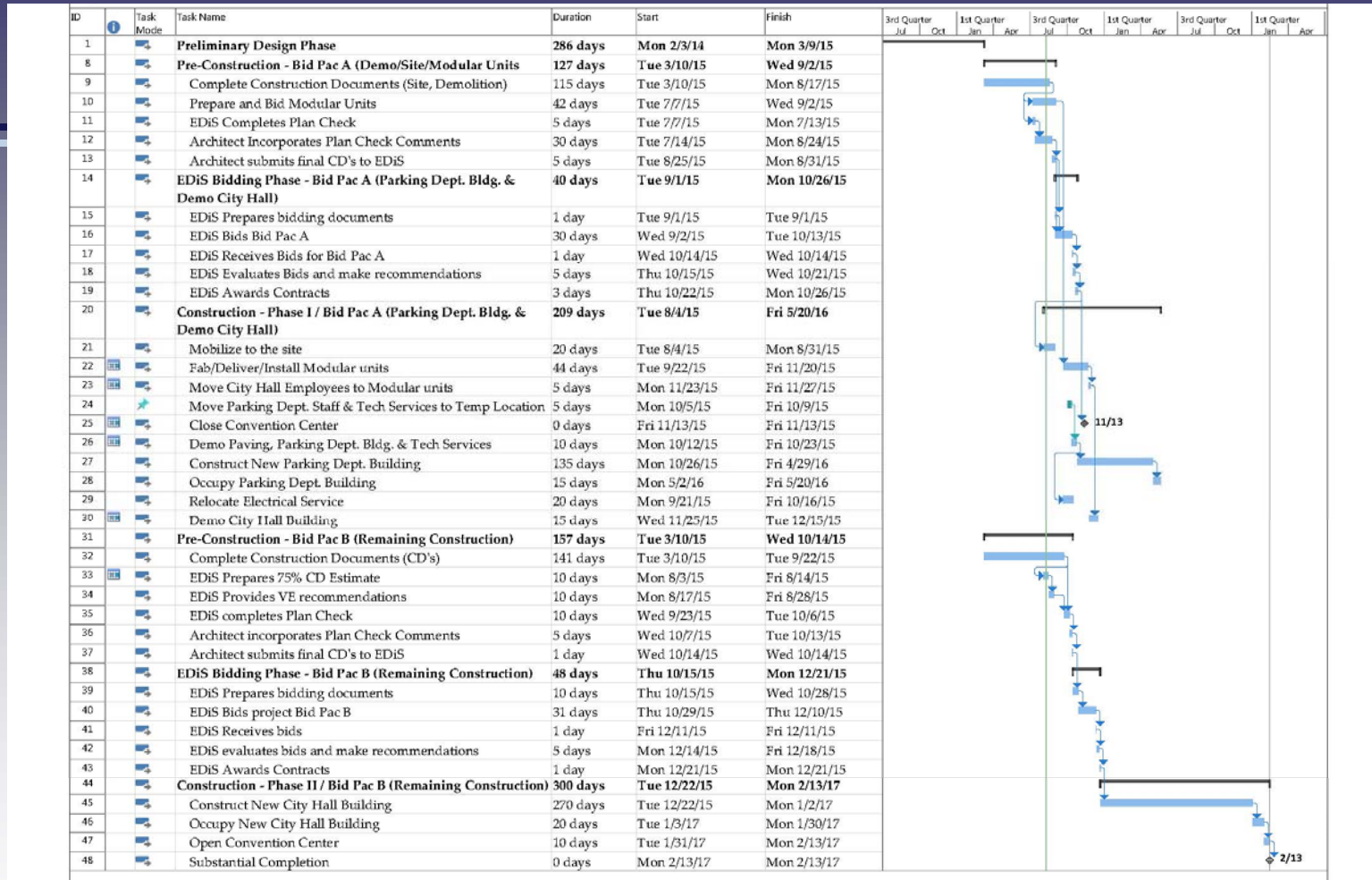


ARCHITECTS ENGINEERS SURVEYORS

ONE PLAZA EAST, SUITE 200 PO. BOX 93 SALISBURY, MD 21803-0093
TEL 410.543.9091 FAX 410.543.4172
23 NORTH WALNUT STREET PO. BOX 809 MILFORD, DE 19963
TEL 302.424.1441 FAX 302.424.0430
WEB www.dbfinc.com

Rehoboth Beach City Hall Complex: Construction Documents

Review: Updated Schedule



ARCHITECTS ENGINEERS SURVEYORS

ONE PLAZA EAST, SUITE 200 PO. BOX 93 SALISBURY, MD 21803-0093
 TEL 410.343.9091 FAX 410.343.4172
 23 NORTH WALNUT STREET PO. BOX 809 MILFORD, DE 19963
 TEL 302.424.1441 FAX 302.424.0430
 WEB www.dbfinc.com

Rehoboth Beach City Hall Complex: Construction Documents

Next Meeting?



DAVIS
BOWEN &
FRIEDEL, INC.



ARCHITECTS ENGINEERS SURVEYORS

ONE PLAZA EAST, SUITE 200 PO. BOX 93 SALESBURY, MD. 21803-0093
TEL 410.543.9091 FAX 410.543.4172
23 NORTH WALNUT STREET PO. BOX 809 MILFORD, DE. 19963
TEL 302.424.1441 FAX 302.424.0430
WEB www.dbfinc.com