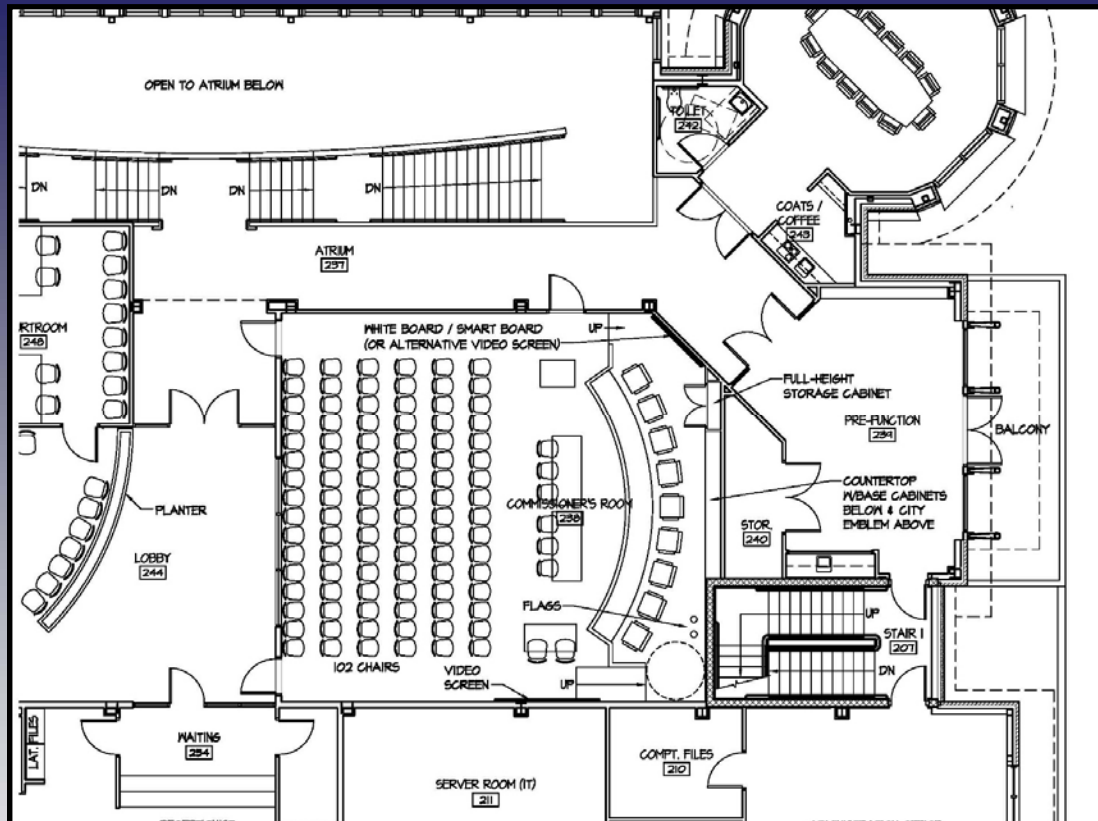


Rehoboth Beach City Hall Complex:

Task Force DD Meeting 3 Rehoboth Beach, Delaware

March 9, 2015



ARCHITECTS ENGINEERS SURVEYORS

ONE PLAZA EAST, SUITE 200, P.O. BOX 93, SALISBURY, MD 21803-0093
TEL 410.543.9091 FAX 410.543.4172
23 NORTH WALNUT STREET, P.O. BOX 809, MILFORD, DE 19963
TEL 302.424.1441 FAX 302.424.0430
WEB www.dbfinc.com

Meeting Agenda

- Welcome
- Review: Updated Commissioner's Room Layout
- Review: Updated Atrium Design
- Presentation/Consensus: Parking Meter Building Schematic Design
 - Original Site Layout
 - Existing Site Survey
 - Neighborhood Context
 - Proposed Schematic Design
- Review: Scope & Schedule for Next Meeting

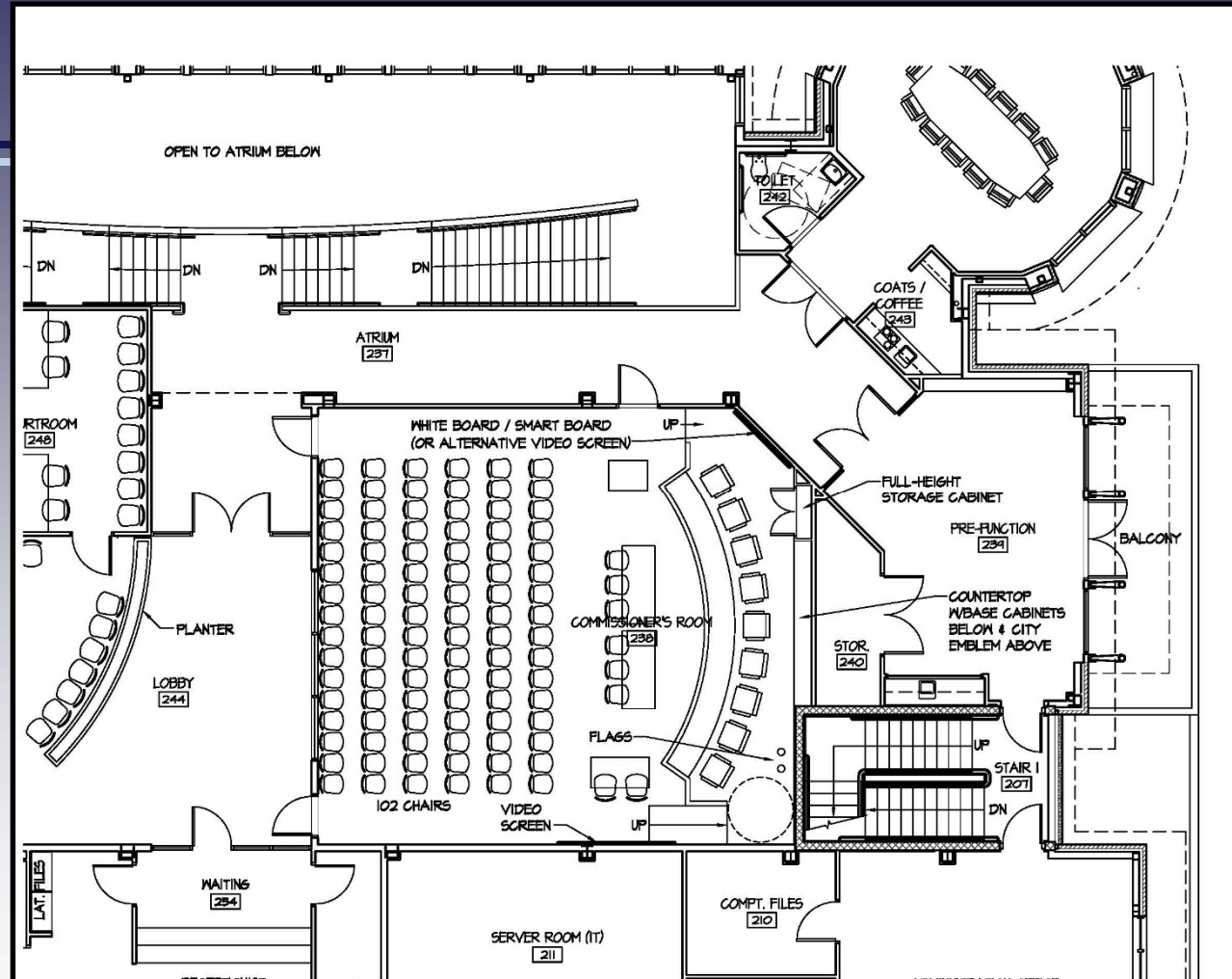
Rehoboth Beach
City Hall Complex



ARCHITECTS ENGINEERS SURVEYORS

ONE PLAZA EAST, SUITE 200 PO. BOX 93 SALISBURY, MD 21803-0093
TEL 410.543.9091 FAX 410.543.4172
23 NORTH WALNUT STREET PO. BOX 809 MILFORD, DE 19963
TEL 302.424.1441 FAX 302.424.0430
WEB www.dbfinc.com

Review/Consensus: Commissioner's Room



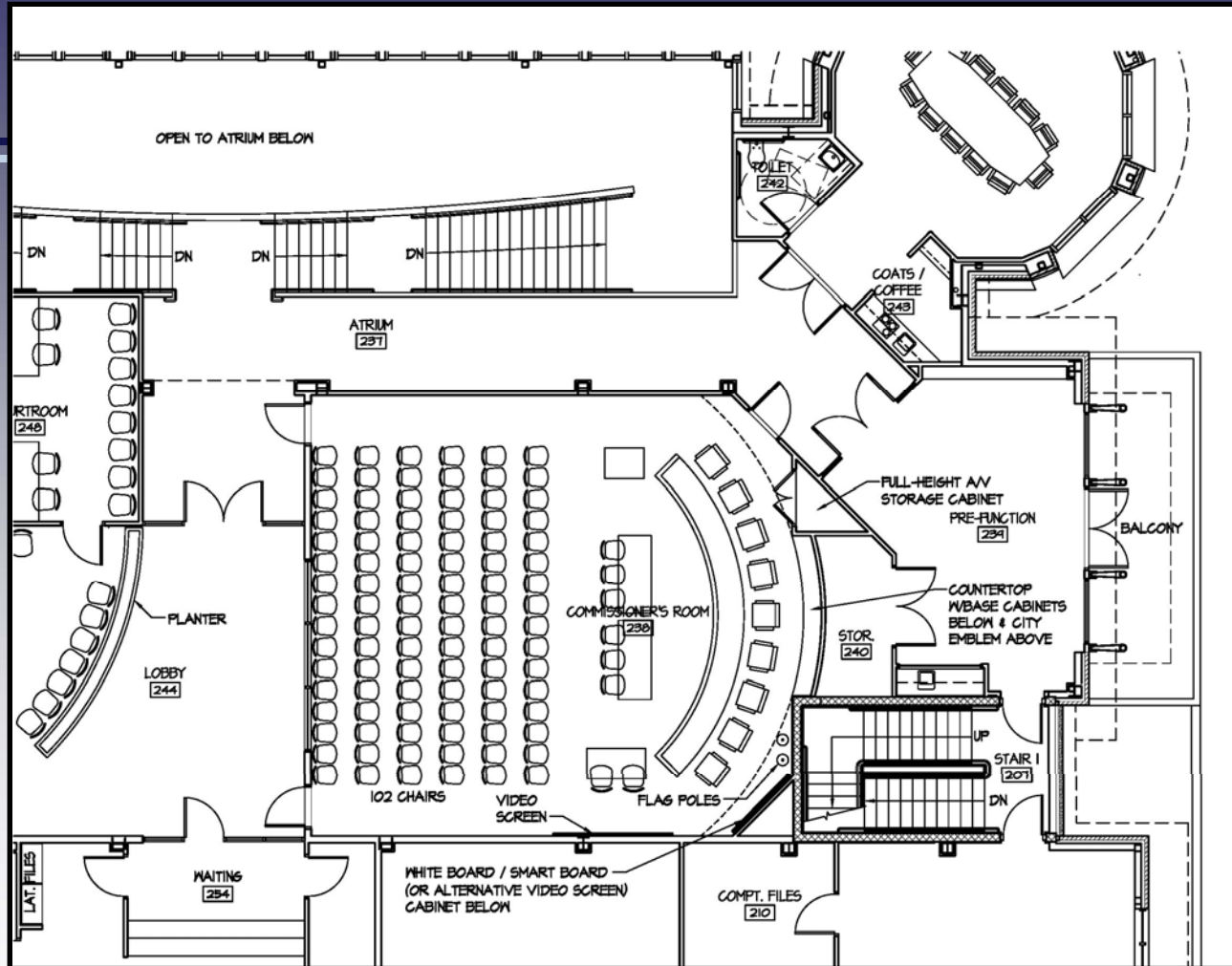
Alternative #7: Preferred Plan 02/09/15



ARCHITECTS ENGINEERS SURVEYORS

ONE PLAZA EAST, SUITE 200 PO. BOX 93 SALISBURY, MD 21803-0093
TEL 410.543.9091 FAX 410.543.4172
23 NORTH WALNUT STREET PO. BOX 809 MILFORD, DE 19963
TEL 302.424.1441 FAX 302.424.0430
WEB www.dbfinc.com

Review/Consensus: Commissioner's Room



Alternative #7a: Updated Plan 03/09/15



ARCHITECTS ENGINEERS SURVEYORS

ONE PLAZA EAST SUITE 200 PO. BOX 93 SALISBURY, MD 21803-0093
TEL 410.543.9091 FAX 410.543.4172
23 NORTH WALNUT STREET PO. BOX 809 MILFORD, DE 19963
TEL 302.424.1441 FAX 302.424.0430
WEB www.dbfinc.com

Review: Atrium



ARCHITECTS ENGINEERS SURVEYORS

ONE PLAZA EAST, SUITE 200 PO. BOX 93 SALISBURY, MD 21803-0093
TEL 410.543.9091 FAX 410.543.4172
23 NORTH WALNUT STREET PO. BOX 809 MILFORD, DE 19963
TEL 302.424.1441 FAX 302.424.0430
WEB www.dbfinc.com

Review: Atrium



ARCHITECTS ENGINEERS SURVEYORS

ONE PLAZA EAST, SUITE 200 PO. BOX 93 SALISBURY, MD. 21803-0093
TEL 410.543.9091 FAX 410.543.4172
23 NORTH WALNUT STREET PO. BOX 809 MILFORD, DE 19963
TEL 302.424.1441 FAX 302.424.0430
WEB www.dbfinc.com

Review: Atrium



ARCHITECTS ENGINEERS SURVEYORS

ONE PLAZA EAST, SUITE 200 P.O. BOX 93 SALISBURY, MD 21803-0093
TEL 410.543.9091 FAX 410.543.4172
23 NORTH WALNUT STREET P.O. BOX 809 MILFORD, DE 19963
TEL 302.424.1441 FAX 302.424.0430
WEB www.dbfinc.com

Review: Atrium



ARCHITECTS ENGINEERS SURVEYORS

ONE PLAZA EAST, SUITE 200 PO. BOX 93 SALISBURY, MD 21803-0093
TEL 410.543.9091 FAX 410.543.4172
23 NORTH WALNUT STREET PO. BOX 809 MILFORD, DE 19963
TEL 302.424.1441 FAX 302.424.0430
WEB www.dbfinc.com

Review: Atrium



ARCHITECTS ENGINEERS SURVEYORS

ONE PLAZA EAST, SUITE 200 PO. BOX 93 SALISBURY, MD 21803-0093
TEL 410.543.9091 FAX 410.543.4172
23 NORTH WALNUT STREET PO. BOX 809 MILFORD, DE 19963
TEL 302.424.1441 FAX 302.424.0430
WEB www.dbfnc.com

Rehoboth Beach Parking Meter Building: Schematic Design

Review/Consensus: Parking Meter Building



Original Site Layout

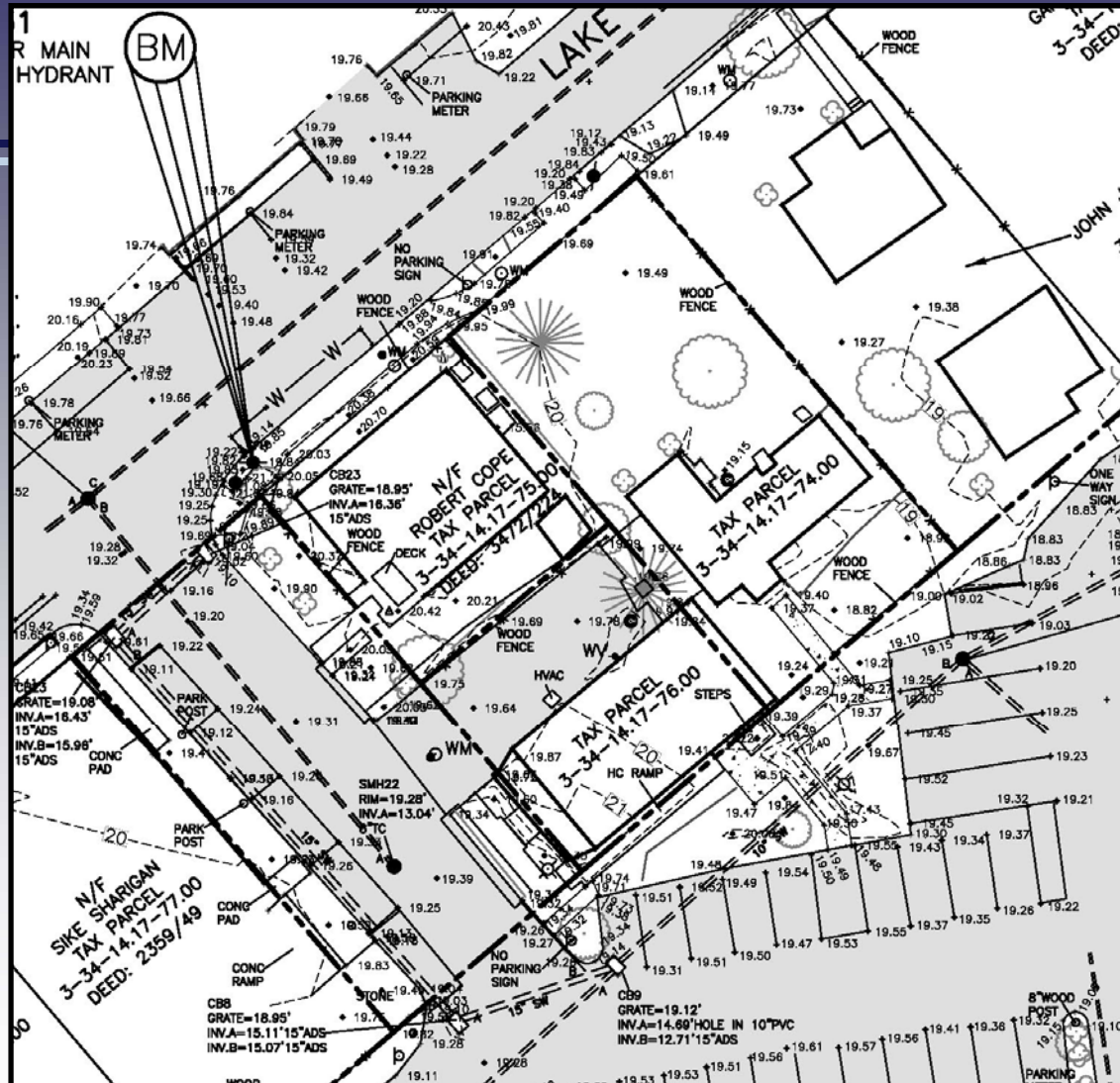


ARCHITECTS ENGINEERS SURVEYORS

ONE PLAZA EAST, SUITE 200 P.O. BOX 93 SALISBURY, MD 21803-0093
TEL 410.543.9091 FAX 410.543.4172
23 NORTH WALNUT STREET P.O. BOX 809 MILFORD, DE 19963
TEL 302.424.1441 FAX 302.424.0430
WEB www.dbfinc.com

Rehoboth Beach Parking Meter Building: Schematic Design

Review/Consensus: Parking Meter Building



Existing Site Survey



ARCHITECTS ENGINEERS SURVEYORS

ONE PLAZA EAST, SUITE 200 P.O. BOX 93 SALISBURY, MD 21803-0093
TEL 410.343.9091 FAX 410.343.4172
23 NORTH WALNUT STREET P.O. BOX 809 MILFORD, DE 19963
TEL 302.424.1441 FAX 302.424.0430
WEB www.dbfnc.com

Rehoboth Beach Parking Meter Building: Schematic Design

Review/Consensus: Parking Meter Building



Neighborhood Context: Aerial View



ARCHITECTS ENGINEERS SURVEYORS

ONE PLAZA EAST SUITE 200 PO. BOX 93 SALISBURY, MD 21803-0093
TEL 410.543.9091 FAX 410.543.4172
23 NORTH WALNUT STREET PO. BOX 809 MILFORD, DE 19963
TEL 302.424.1441 FAX 302.424.0430
WEB www.dbfinc.com

Rehoboth Beach Parking Meter Building: Schematic Design

Review/Consensus: Parking Meter Building



Neighborhood Context: Lake Avenue Eastbound



DAVIS
BOWEN &
FRIEDEL, INC.

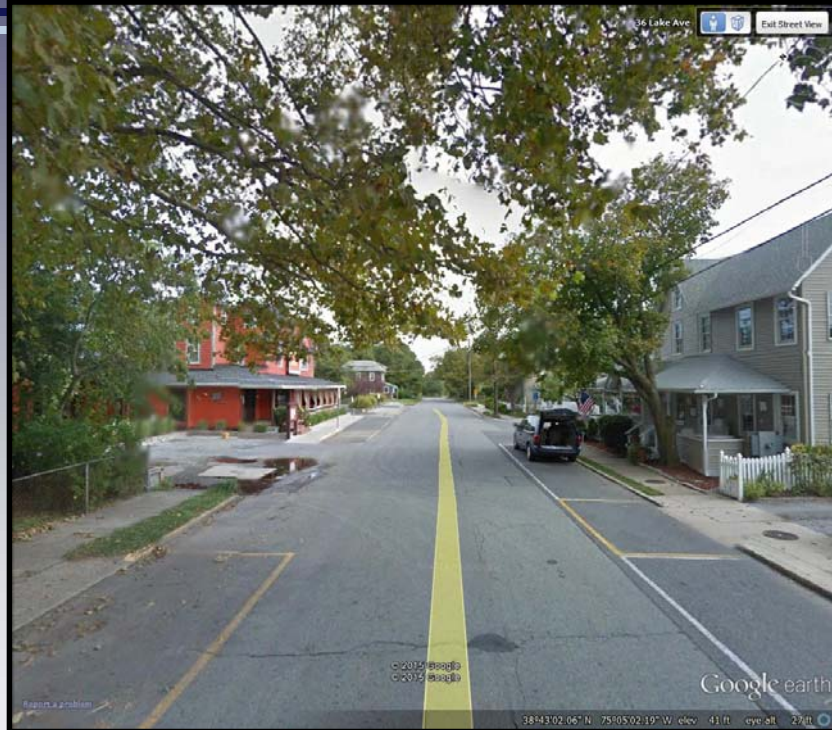


ARCHITECTS ENGINEERS SURVEYORS

ONE PLAZA EAST, SUITE 200 PO. BOX 93 SALISBURY, MD 21803-0093
TEL 410.543.9091 FAX 410.543.4172
23 NORTH WALNUT STREET PO. BOX 809 MILFORD, DE 19963
TEL 302.424.1441 FAX 302.424.0430
WEB www.dbfinc.com

Rehoboth Beach Parking Meter Building: Schematic Design

Review/Consensus: Parking Meter Building



Neighborhood Context: Lake Avenue Eastbound



DAVIS
BOWEN &
FRIEDEL, INC.



ARCHITECTS ENGINEERS SURVEYORS

ONE PLAZA EAST, SUITE 200 PO. BOX 93 SALISBURY, MD 21803-0093
TEL 410.543.9091 FAX 410.543.4172
23 NORTH WALNUT STREET PO. BOX 809 MILFORD, DE 19963
TEL 302.424.1441 FAX 302.424.0430
WEB www.dbfinc.com

Rehoboth Beach Parking Meter Building: Schematic Design

Review/Consensus: Parking Meter Building



Neighborhood Context: Lake Avenue Eastbound



DAVIS
BOWEN &
FRIEDEL, INC.



ARCHITECTS ENGINEERS SURVEYORS

ONE PLAZA EAST, SUITE 200 PO. BOX 93 SALISBURY, MD 21803-0093
TEL 410.543.9091 FAX 410.543.4172
23 NORTH WALNUT STREET PO. BOX 809 MILFORD, DE 19963
TEL 302.424.1441 FAX 302.424.0430
WEB www.dbfinc.com

Review/Consensus: Parking Meter Building



Neighborhood Context: Lake Avenue Westbound



ARCHITECTS ENGINEERS SURVEYORS

ONE PLAZA EAST, SUITE 200 PO. BOX 93 SALISBURY, MD 21803-0093
TEL 410.543.9091 FAX 410.543.4172
23 NORTH WALNUT STREET PO. BOX 809 MILFORD, DE 19963
TEL 302.424.1441 FAX 302.424.0430
WEB www.dbfinc.com

Rehoboth Beach Parking Meter Building: Schematic Design

Review/Consensus: Parking Meter Building



Neighborhood Context: Lake Avenue Westbound



ARCHITECTS ENGINEERS SURVEYORS

ONE PLAZA EAST, SUITE 200 PO. BOX 93 SALESBURY, MD 21803-0093
TEL 410.543.9091 FAX 410.543.4172
23 NORTH WALNUT STREET PO. BOX 809 MILFORD, DE 19963
TEL 302.424.1441 FAX 302.424.0430
WEB www.dbfinc.com

Review/Consensus: Parking Meter Building



Neighborhood Context: Lake Avenue Westbound

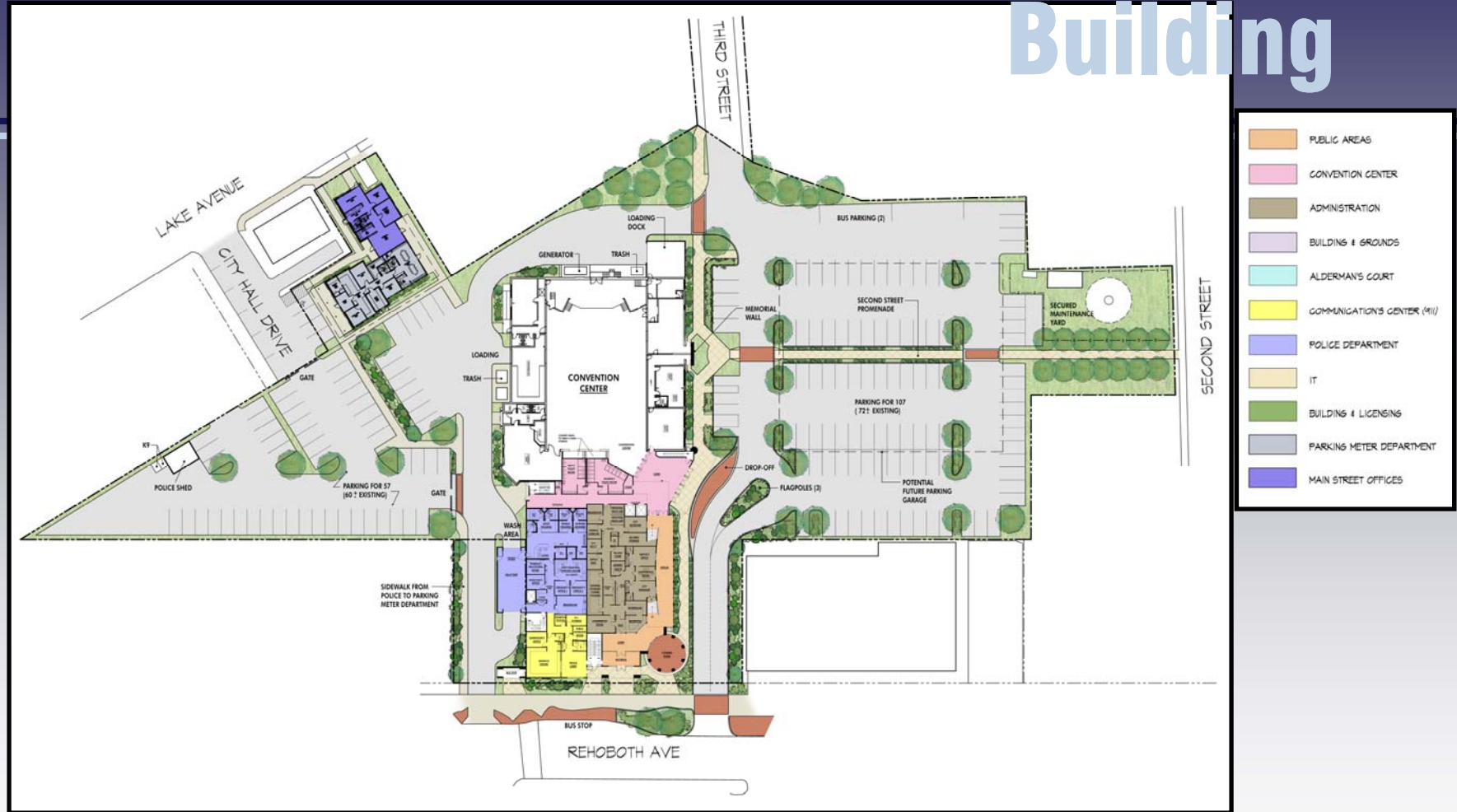


ARCHITECTS ENGINEERS SURVEYORS

ONE PLAZA EAST SUITE 200 PO. BOX 93 SALISBURY, MD 21803-0093
TEL 410.543.9091 FAX 410.543.4172
23 NORTH WALNUT STREET PO. BOX 809 MILFORD, DE 19963
TEL 302.424.1441 FAX 302.424.0430
WEB www.dbfinc.com

Rehoboth Beach Parking Meter Building: Schematic Design

Review/Consensus: Parking Meter Building



Proposed Site Plan



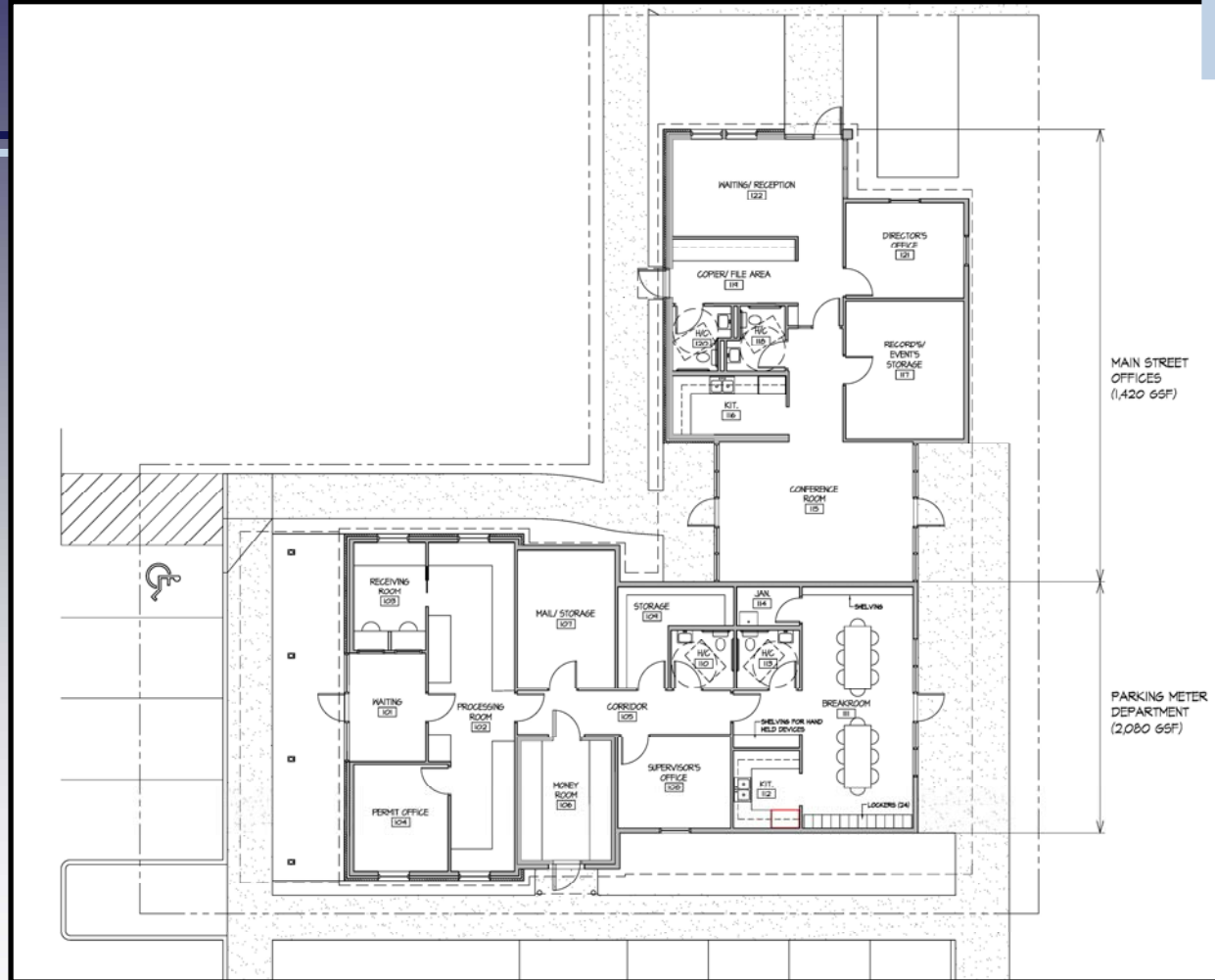
DAVIS
BOWEN &
FRIEDEL, INC.



ARCHITECTS ENGINEERS SURVEYORS

ONE PLAZA EAST, SUITE 200, P.O. BOX 93, SALISBURY, MD 21803-0093
TEL 410.543.9091 FAX 410.543.4172
23 NORTH WALNUT STREET, P.O. BOX 809, MILFORD, DE 19963
TEL 302.424.1441 FAX 302.424.0430
WEB www.dbfinc.com

Review/Consensus: Parking Meter Building



Proposed Floor Plan



ARCHITECTS ENGINEERS SURVEYORS

ONE PLAZA EAST SUITE 200 PO. BOX 93 SALISBURY, MD 21803-0093
TEL 410.543.9091 FAX 410.543.4172
23 NORTH WALNUT STREET PO. BOX 809 MILFORD, DE 19963
TEL 302.424.1441 FAX 302.424.0430
WEB www.dbfinc.com

Rehoboth Beach Parking Meter Building: Schematic Design

Review/Consensus: Parking Meter Building



View from South



ARCHITECTS ENGINEERS SURVEYORS

ONE PLAZA EAST SUITE 200 PO. BOX 93 SALISBURY, MD 21803-0093
TEL 410.543.9091 FAX 410.543.4172
23 NORTH WALNUT STREET PO. BOX 809 MILFORD, DE 19963
TEL 302.424.1441 FAX 302.424.0430
WEB www.dbfinc.com

Rehoboth Beach Parking Meter Building: Schematic Design

Review/Consensus: Parking Meter Building



View from West



DAVIS
BOWEN &
FRIEDEL, INC.



ARCHITECTS ENGINEERS SURVEYORS

ONE PLAZA EAST, SUITE 200 PO. BOX 93 SALESBURY, MD. 21803-0093
TEL 410.543.9091 FAX 410.543.4172
23 NORTH WALNUT STREET PO. BOX 809 MILFORD, DE. 19963
TEL 302.424.1441 FAX 302.424.0430
WEB www.dbfinc.com

Rehoboth Beach Parking Meter Building: Schematic Design

Review/Consensus: Parking Meter Building



View from North



DAVIS
BOWEN &
FRIEDEL, INC.



ARCHITECTS ENGINEERS SURVEYORS

ONE PLAZA EAST, SUITE 200 PO. BOX 93 SALESBURY, MD 21803-0093
TEL 410.543.9091 FAX 410.543.4172
23 NORTH WALNUT STREET PO. BOX 809 MILFORD, DE 19963
TEL 302.424.1441 FAX 302.424.0430
WEB www.dbfinc.com

Next Meeting

- Present Design Development of Parking Meter/Main Street Building
- Review Updated Phasing/Schedule for Complex
- Review Updated Cost Estimate for Complex

Next Meeting Date: March 9, 2015



ARCHITECTS ENGINEERS SURVEYORS

ONE PLAZA EAST, SUITE 200 PO. BOX 93 SALESBURY, MD 21803-0093
TEL 410.543.9091 FAX 410.543.4172
23 NORTH WALNUT STREET PO. BOX 809 MILFORD, DE 19963
TEL 302.424.1441 FAX 302.424.0430
WEB www.dbfinc.com