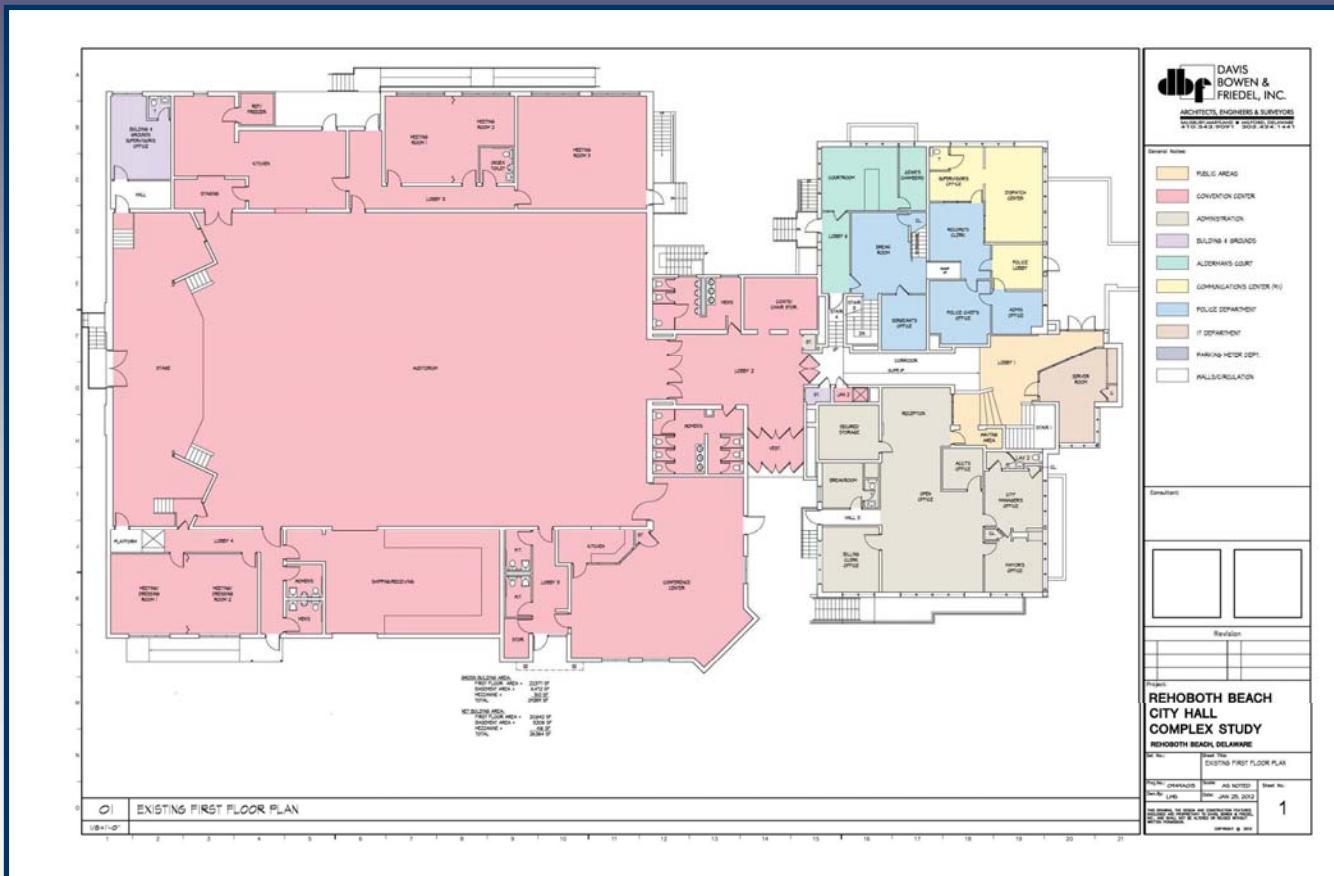


# Rehoboth Beach City Hall Complex: Feasibility Assessment

# Building Evaluation



## STRUCTURAL

- ❖ Minor Areas of Moisture Penetration in Basement
- ❖ Minor Wood Roof Deck Deterioration
- ❖ Numerous Masonry Defects in Brick Walks and Retaining Walls
- ❖ Beam Supporting Loading Dock Canopy Appears Undersized for Snow Loads

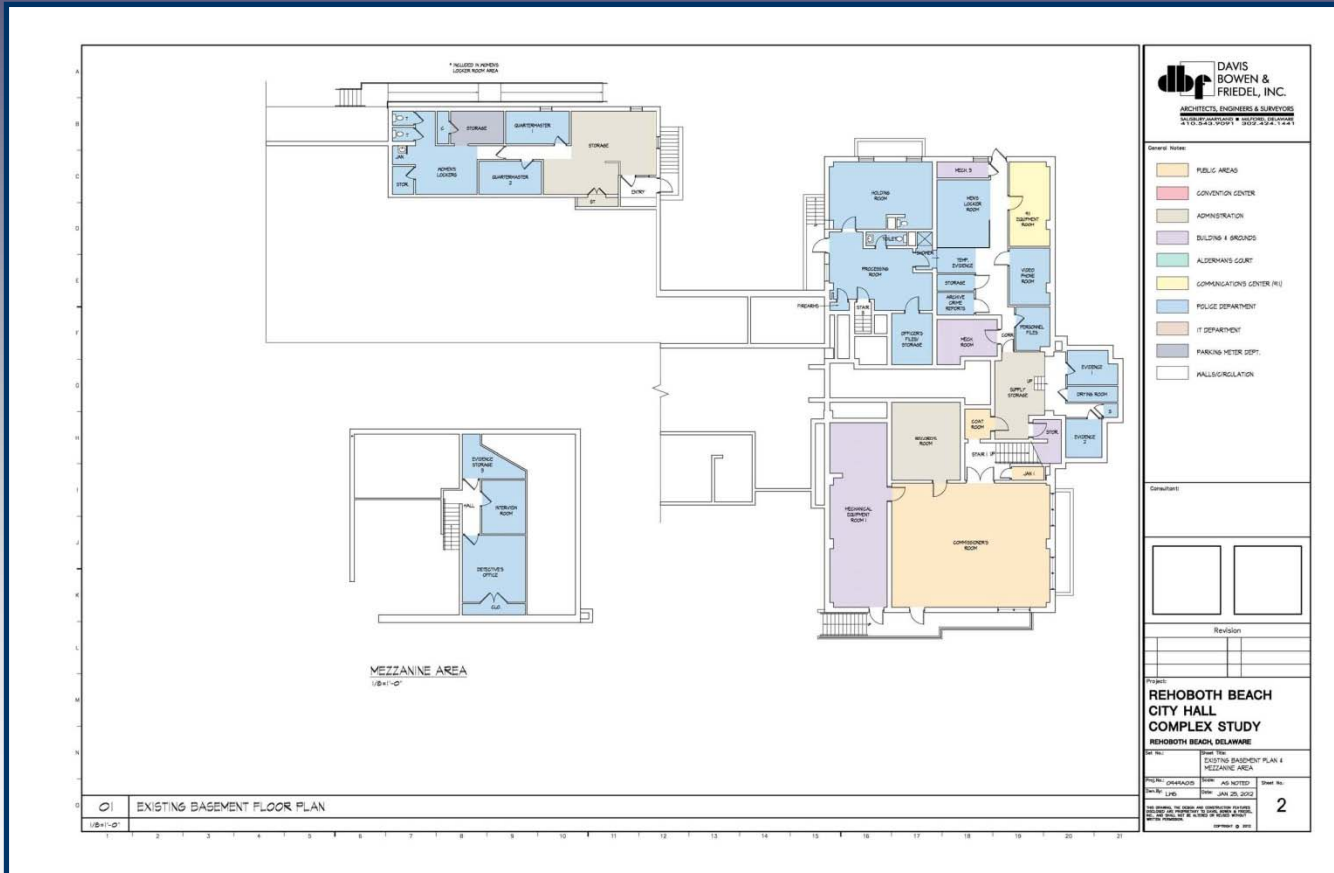


ARCHITECTS ENGINEERS SURVEYORS

ONE PLAZA EAST SUITE 200 PO. BOX 93 SALISBURY, MD 21803-0093  
 TEL 410.343.9091 FAX 410.343.4172  
 23 NORTH WALNUT STREET PO. BOX 809 MILFORD, DE 19963  
 TEL 302.424.1441 FAX 302.424-0430  
 WEB www.dbrinc.com

# Rehoboth Beach City Hall Complex: Feasibility Assessment

# Building Evaluation



## CODE EVALUATION\*

- ❖ Fire Suppression System Non-Existent
- ❖ First Floor Area Exceeds Permitted Floor Area for Mixed-Occupancy, Non-Separated Building
- ❖ Basement Egress Passes Through Storage Areas in Some Instances
- ❖ Some Doors Do Not Swing in Direction of Egress Travel
- ❖ Several ADA Deficiencies

\* Based upon current codes; does not necessarily mean that building is non-compliant



ARCHITECTS ENGINEERS SURVEYORS

ONE PLAZA EAST SUITE 200 PO. BOX 93 SALISBURY, MD 21803-0093  
TEL 410.343.9091 FAX 410.343.4172  
23 NORTH WALNUT STREET PO. BOX 809 MILFORD, DE 19963  
TEL 302.424.1441 FAX 302.424.0430  
WEB www.dbbinc.com