

**DEPARTMENT OF NATURAL RESOURCES
AND
ENVIRONMENTAL CONTROL**

Delaware Water Pollution Control Revolving Loan Fund

City of Rehoboth Beach

December 15, 2008

DIVISION OF WATER RESOURCES
FINANCIAL ASSISTANCE BRANCH

Terry L. Deputy, CEcD

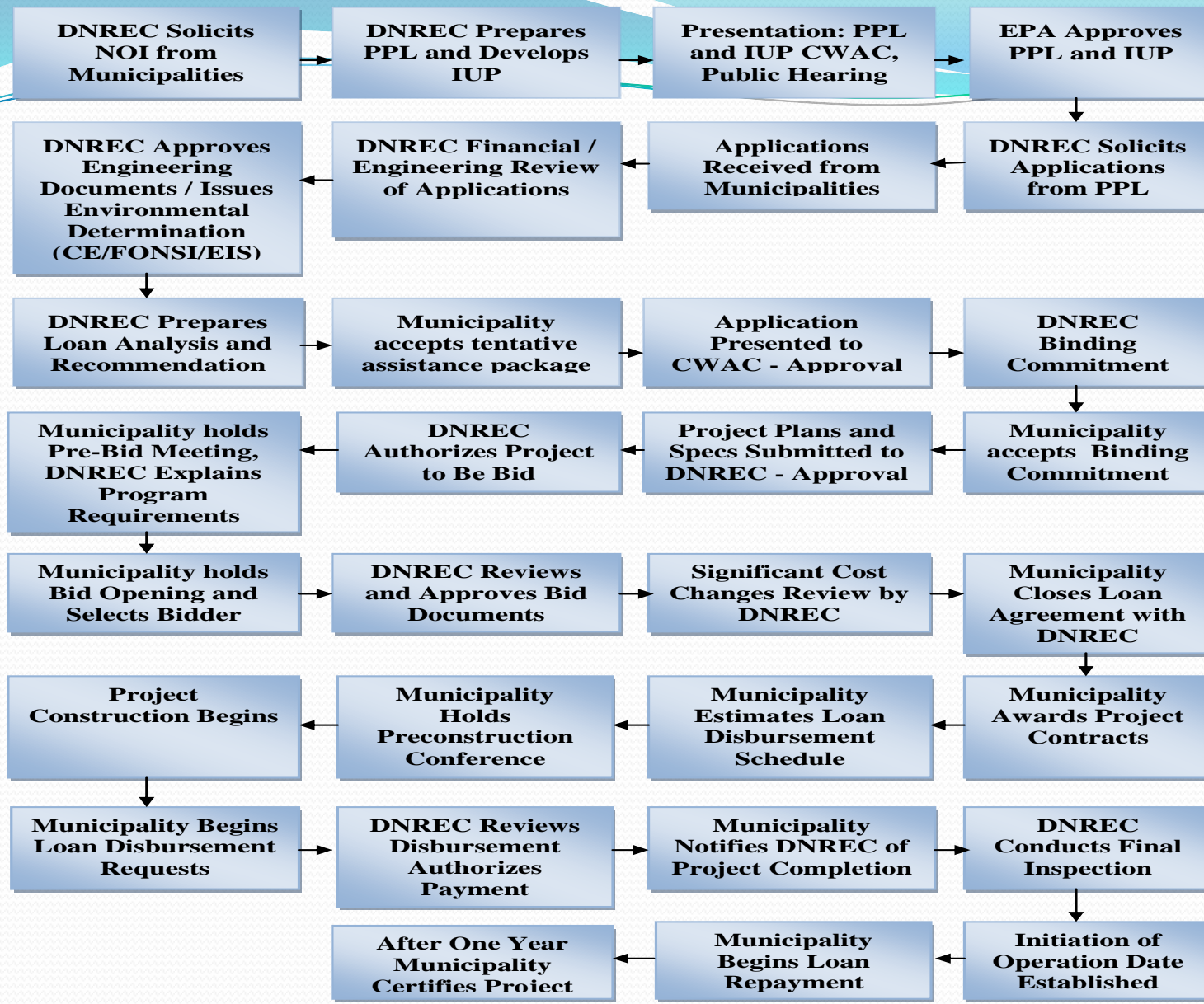
Delaware Water Pollution Control Revolving Loan Fund

City of Rehoboth Beach

- Presentation Purpose
 - To provide the City of Rehoboth Beach with an overview of the Delaware Water Pollution Control Revolving Loan Fund (WPCRLF)
 - To provide an overview of possible wastewater user rates, given an **assumed project cost, assuming that the project is fully funded through the WPCRLF**, and other cost variables taken from the Stearns & Wheler Report.
 - To be a resource to the City of Rehoboth Beach once a wastewater disposal option is selected.

- Clean Water SRF Overview

- 1987 - Federal grant assistance for construction of wastewater facilities was replaced with a revolving loan fund program
- Communities are required to repay wastewater infrastructure loans, thereby providing a source of funds for new loans
- 1990 - Delaware Water Pollution Control Revolving Loan Fund program was created; federal capitalization grants seed the program along with required twenty percent state matching funds
- Clean Water Advisory Council, is charged with evaluating, establishing, and recommending strategies, plans, and procedures to help ensure the long-term provision of adequate wastewater facilities in Delaware



NOI – Notice-Of-Intent
 PPL – Project Priority List
 IUP – Intended Use Plan
 CE – Categorical Exclusion
 FONSI – Finding of No Significant Impact
 EIS – Environmental Impact Statement

Delaware Water Pollution Control Revolving Loan Fund

City of Rehoboth Beach

• <u>Assumption</u> : Project Cost - CWSRF loan		\$36,000,000
• Annual Debt Service @ 3.06% /20 years		2,419,951
• Estimated annual O,M, R cost*		<u>418,000</u>
• Total Annual Cost		\$ 2,837,951
• Initiation of Operations: 2012		
• Projected MHI: 2012		\$ 72,051
• EDU's @ Initiation of Operations:*		
• Residential:	2,115	
• Commercial:	<u>1,302</u>	
• Total EDU's	3,417	
• Residential share of Total SRF loan annual cost @ 62%		\$ 1,759,530
• Projected Annual Residential Cost per EDU		\$ 832
• Existing Annual Rate per EDU(in 2012 \$s)*		<u>344</u>
		\$ 1,176
• Affordability index per EDU		1.63

* Stearns & Wheeler, LLC report, 2005

Questions